

**Etnobotánica Kichwa de Tamia Yura, Napo-Ecuador**  
Kichwa Ethnobotany of Tamia Yura, Napo-Ecuador

**Carlos E. Cerón-M<sup>1</sup>, Carmita I. Reyes-T<sup>1,2</sup>, Camilo Tapuy<sup>3</sup>, Edwin Tapuy<sup>3</sup>,  
Lady Tapuy<sup>3</sup> y Benjamín Mamallacta<sup>3</sup>**

<sup>1</sup>Herbario Alfredo Paredes (QAP),

<sup>2</sup>Facultad de Ciencias Químicas, Universidad Central del Ecuador,

<sup>3</sup>Centro Comunitario Kichwa Tamia Yura

© Fotos de Carlos Eduardo Cerón Martínez y Carmita Isabel Reyes Tello



**Localidad:** Provincia de Napo, cantón Tena, Centro Comunitario Kichwa Tamia Yura, extensión aproximada 30 hectáreas.

**Estatus:** Comunitario

**Coordenadas:** 00°58.19'S - 77°48.03'W

**Altitud:** 625 m.

**Formación Vegetal:** Bosque siempre verde de tierras bajas

**Trabajo de Campo:** 29-mayo-2008, 11-22-agosto-2008.

**Trabajo de Laboratorio:** 2008-2010

**Elaboración de la Guía:** 2019-2022

**Comprobantes:** Cerón-M Carlos E., Reyes-T Carmita I. y Mamallacta Benjamín 62317-62357, Cerón-M Carlos E., Reyes-T Carmita I., Mamallacta Benjamín, Tapuy Camilo, Tapuy Lady, Tapuy Edwin 63014-63416, Reyes-T Carmita I., Cerón-M Carlos E., Tapuy Camilo, Tapuy Lady, Tapuy Dalia y Tapuy Edwin 2672-2786 (QAP).

**Nota:** se incluye en orden alfabético primero el nombre de la planta Kichwa y abajo el científico, en el recuadro a la izquierda de cada imagen en números incluye la categoría de uso (Alimenticio = 1, Alimento animal = 2, Caza y pesca = 3, Combustible = 4, Comercial = 5, Construcción = 6, Cultural = 7, Doméstico = 8, Medicinal = 9, Misceláneo = 10).



Tamiayura



Tamiayura, interior del bosque



Tamiayura, caverna



Colección de especímenes



9 Ajua macana  
*Asplenium serratum*



2 Ajua macana panga  
*Anthurium mindense*



5 Ajua sachapalta  
*Cinnamomum napoense*



9 Ajua shica panga  
*Polybotrya crassirhizoma*



2 Ajua sulima  
*Hillia parasitica*



7,9 Ajus huasca  
*Mansoa standleyi*



9 Allpa amarum caspi  
*Ouratea williamsii*



2,6 Allpa chutu yura  
*Allophylus divaricatus*



2,4 Allpa paitzi  
*Miconia venulosa*



9 Allpa sinkra panga  
*Anthurium apaporanum*



9 Alto macana panga  
*Anthurium harlingianum*



2,3 Ambi huasca  
*Chondrodendro tomentosum*



1,2,4,6,10 Andia uvillas  
*Pourouma mollis* subsp. *triloba*



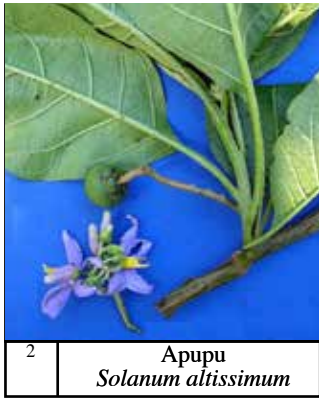
7,9 Anis panga  
*Piper auritum*



2 Anllu panga  
*Clusia pallida*



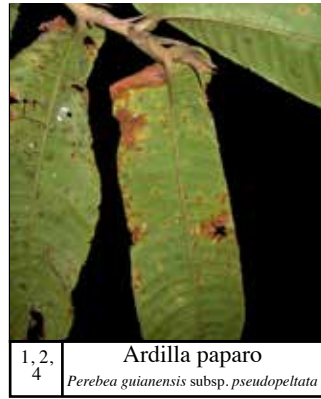
10 Antorcha  
*Zingiber spectabile*



2 Apupu  
*Solanum altissimum*



9 Araña caspi  
*Cordia nodosa*



1, 2, 4 Ardilla paparo  
*Perebea guianensis* subsp. *pseudopeltata*



7 Ashanga huasca  
*Thoracocarpus bissectus*



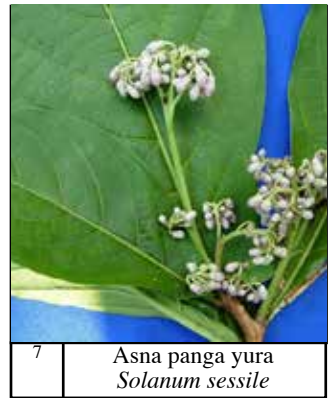
8, 9 Asna panga culantro  
*Eryngium foetidum*



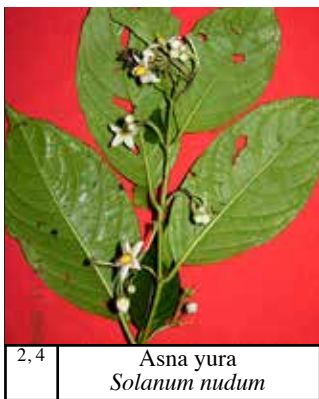
2, 7, 9 Asna panga yura  
*Saurauia prainiana*



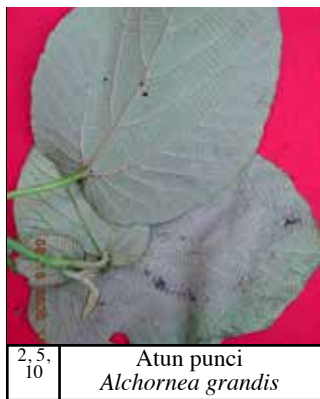
2 Asna panga yura  
*Solanum lepidotum*



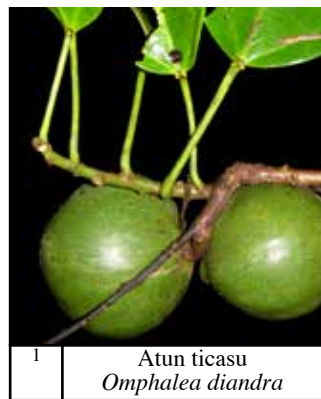
7 Asna panga yura  
*Solanum sessile*



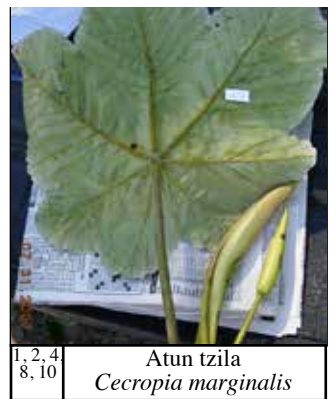
2, 4 Asna yura  
*Solanum nudum*



2, 5, 10 Atun puncu  
*Alchornea grandis*



1 Atun ticasu  
*Omphalea diandra*



1, 2, 4, 8, 10 Atun tzila  
*Cecropia marginalis*



2 Auro panga  
*Notopleura epiphytica*



1, 4, 5 Avío  
*Pouteria caimito*



2, 4, 5, 6, 7, 9, 10 Aya cara  
*Guatteria glaberrima*



7, 10 Ayahuasca  
*Banisteriopsis caapi*



2 Bajo lentejas  
*Oreopanax* aff. *floribundus*



5, 9, 10 Bálsamo  
*Myroxylon balsamum*



9 Bara casha  
*Desmoncus polyacanthos* var. *prunifer*



10 Bastón del rey  
*Etlingera elatior*



6,9  
Belute  
*Philodendron megalophyllum*



2,7,9  
Boa yura  
*Cecropia engleriana*



1  
Borojo  
*Alibertia patinoi*



6,9  
Caballo caspi  
*Swartzia calophylla*



1,5,9  
Cacao  
*Theobroma cacao*



5  
Calu calu  
*Sloanea grandiflora*



1,2,9  
Cambi  
*Herrania cuatrecasana*



10  
Canoa huasca  
*Machaerium cuspidatum*



10  
Canoa huasca  
*Paragonia pyramidata*



9,10  
Canutillo  
*Megaskepasma erythrochlamys*



9,10  
Caña Agria  
*Costus amazonicus* subsp. *amazonicus*



1,2,4  
6,7,  
10  
Cara huasca  
*Annona papilionella*



1,2,3  
6,10  
Cara putu  
*Iriartea deltoidea*



4,5,  
6,9  
Casha caspi  
*Zanthoxylum riedelianum*



2  
Cautel panga  
*Fareamea torquata*



6,10  
Chacana huasca  
*Bauhinia guianensis*



1,2,  
7,8,9  
Chamburo  
*Jacaratia spinosa*



2,5,7,  
10  
Chaquishca caucho  
*Sapium laurifolium*



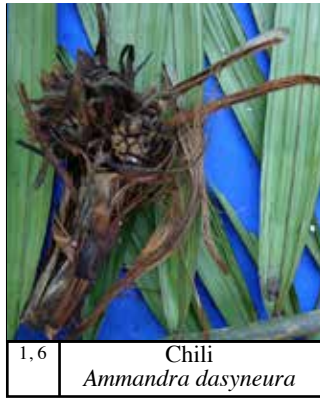
1,2,7  
Chichicu muyo  
*Gloeospermum equatoriense*



2,4,6  
Chichicu micuna muyo  
*Citronella incarum*



3 Chilca ambi  
*Schoenobilus daphnoides*



1,6 Chili  
*Ammandra dasyneura*



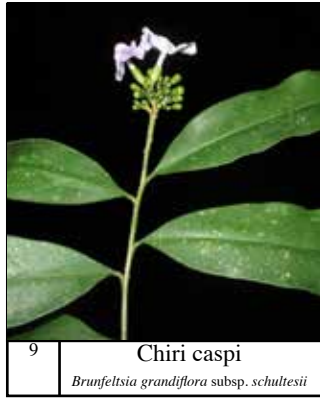
1,6,7,8,9,10 Chingo  
*Socratea exorrhiza*



6 Chiquin huasca  
*Dioeclea macrocarpa*



10 Chiquin huasca  
*Dioeclea ucayalina*



9 Chiri caspi  
*Brunfelsia grandiflora* subsp. *schultesii*



2,6,7 Chiri guayusa  
*Banara nitida*



6,9 Chispu casa yura  
*Alsophila cuspidata*



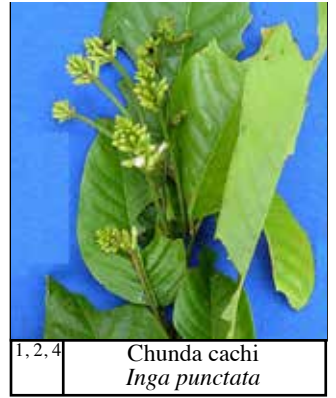
2,9 Chonta rucu paju  
*Anthurium polyschistum*



1,6,10 Chontaduro  
*Bactris gasipaes*



1,2,5,9,10 Chucu  
*Erythrina ulei*



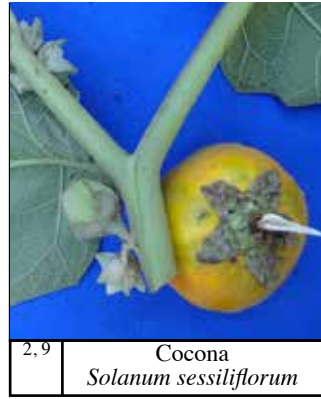
1,2,4 Chunda cachi  
*Inga punctata*



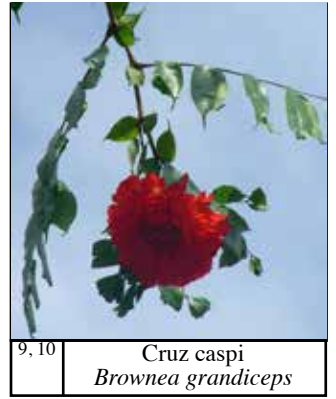
2,6 Chunda caspi  
*Huerteia glandulosa*



2,4,5,6,9 Cidro  
*Cedrela odorata*



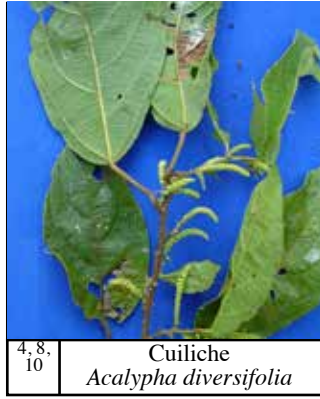
2,9 Cocona  
*Solanum sessiliflorum*



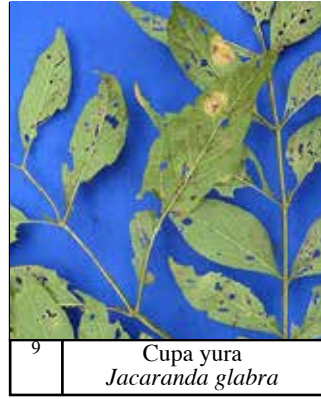
9,10 Cruz caspi  
*Brownea grandiceps*



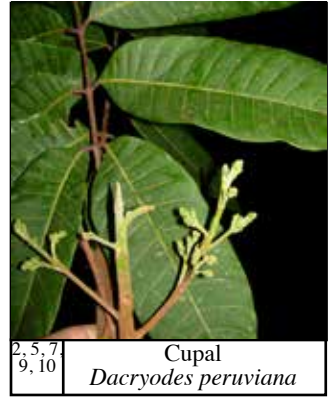
9,10 Cruz caspi  
*Brownea macrophylla*



4,8,10 Cuiliche  
*Acalypha diversifolia*



9 Cupa yura  
*Jacaranda glabra*



2,5,7,9,10 Cupal  
*Dacryodes peruviana*



<sup>9</sup> Curarina  
*Potalia resinifera*



<sup>7</sup> Curcuma  
*Curcuma longa*



<sup>2,9</sup> Cushillo manga  
*Eschweilera andina*



<sup>2,7,8,9</sup> Damoa  
*Heliocarpus americanus*



<sup>9</sup> Dumbiqui callo  
*Columnnea guttata*



<sup>9</sup> Dumbiqui callo  
*Columnnea villosissima*



<sup>10</sup> Dumbiqui callo  
*Philodendron chinchamayense*



<sup>2,5,9</sup> Dumbiqui huapa  
*Virola pavonis*



<sup>1,9</sup> Estrella ticasu  
*Plukenetia polyadenia*



<sup>1,9</sup> Estrella ticasu  
*Plukenetia volubilis*



<sup>9</sup> Gallu ala  
*Drymonia hoppii*



<sup>1,2</sup> Granadilla  
*Passiflora vitifolia*



<sup>9</sup> Guagualpa panga  
*Mollinedia latifolia*



<sup>7,9,10</sup> Guando  
*Brugmansia x insignis*



<sup>1,9</sup> Guayaba  
*Psidium guajava*



<sup>7,9</sup> Guayusa  
*Ilex guayusa*



<sup>10</sup> Hierba icundo  
*Guzmania acuminata*



<sup>1,2,7,9</sup> Huachanso  
*Caryodendron orinocense*



<sup>7,9</sup> Hualumba  
*Selaginella exaltata*



<sup>3,6,9</sup> Huambula  
*Minquartia guianensis*



2, 4, 5, 6  
Huapa  
*Otoba parvifolia*



1, 9  
Huasca dunduma  
*Mikania leiostachya*



10  
Huasca paitzi  
*Blakea bracteata*



7, 9  
Huasca picshua  
*Amphilophium paniculatum*



9  
Huasca shia  
*Mikania guaco*



8, 10  
Huasca tulana  
*Heliconia orthotricha*



1, 2, 9  
Huichilla anana  
*Annona mucosa*



1, 2, 9  
Huiña  
*Musa acuminata*



2  
Ichilia micuna ila muyo  
*Ficus trigona*



10  
Ichilia mucutullu  
*Piper secundum*



2  
Ichilia nanambi  
*Anthurium breviscapum*



2, 4, 5  
Ichilia yura calu calu  
*Cupania aff. cinerea*



10  
Icundo  
*Aechmea zebrina*



10  
Icundo  
*Neoregelia eleutheropetala*



2  
Ila  
*Ficus citrifolia*



2, 5, 8, 9  
Ila  
*Ficus insipida*



2, 9  
Ila  
*Ficus macbridei*



2  
Ila  
*Ficus maxima*



2, 4  
Illa hunga cachi  
*Tachigali inconspicua*



1  
Ilma mati muyo rata  
*Mayna odorata*



2, 4,  
5, 6  
Intachi  
*Chimarrhis hookeri*



2, 4  
Iqui caspi  
*Trophis racemosa*



7, 10  
Ishpa muyo  
*Canna indica* x *generalis*



2, 5, 6  
Ishpinku quillo  
*Nectandra reticulata*



7, 8,  
10  
Itu panga  
*Calathea standleyi*



2, 9,  
10  
Iwichiz  
*Begonia parviflora*



2, 5  
Jandia huapa  
*Virola flexuosa*



1, 2, 6,  
7, 9  
Kili  
*Wettinia maynensis*



9  
Kilun kilun  
*Dichorisandra ulei*



6  
Lacao  
*Ruizodendron ovale*



6, 9,  
10  
Lapito  
*Philodendron heleniae* subsp. *amazonense*



2, 5  
Leito caspi  
*Porcelia mediocris*



2, 7  
Lianchama  
*Poulsenia armata*



1, 9  
Limón  
*Citrus medica*



9  
Limón huando  
*Piper dilatatum*



2, 5, 6  
Linsu caspi  
*Styrax* aff. *macrophyllus*



1, 6,  
7, 10  
Lisan  
*Carludovica palmata*



7, 9  
Lliustunda  
*Couroupita guianensis*



7, 10  
Lomo tue turia  
*Heliconia* aff. *hirsuta*



1, 5, 7  
Lumu  
*Manihot esculenta*

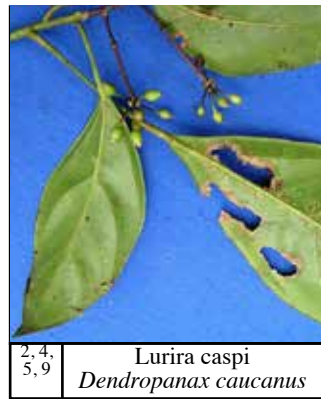




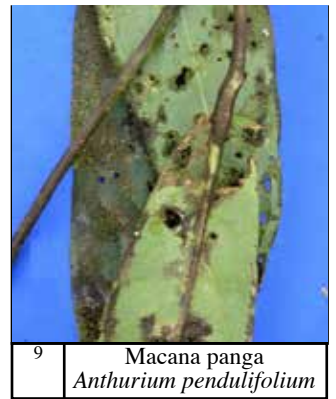
8,9,  
10 Lumucha panga  
*Calathea aff. veitchiana*



4,9 Lunchi  
*Vernonanthura patens*



2,4,  
5,9 Lurira caspi  
*Dendropanax caucanus*



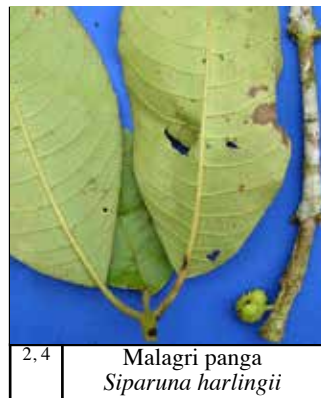
9 Macana panga  
*Anthurium pendulifolium*



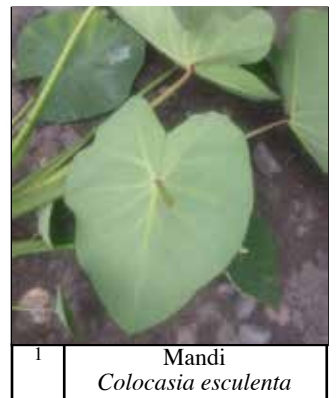
1,2,  
4,5 Machete pacay  
*Inga spectabilis*



2,4,7 Malagri panga  
*Siparuna cervicornis*



2,4 Malagri panga  
*Siparuna harlingii*



1 Mandi  
*Colocasia esculenta*



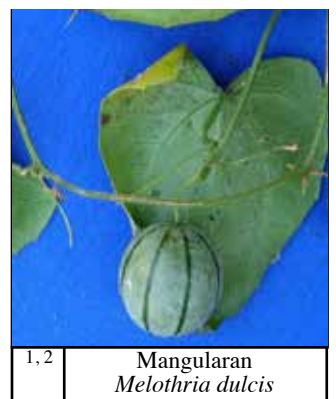
7,8,9 Manduru  
*Bixa orellana*



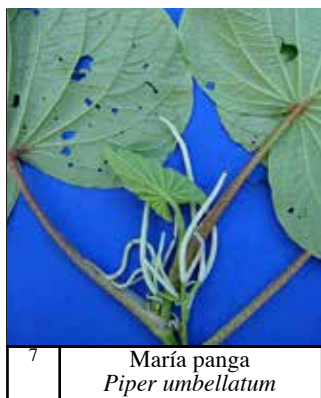
2,3,4 Manduru caspi  
*Marila tomentosa*



1,2,  
4,9 Manga allpa cachi  
*Inga multinervis*



1,2 Mangularan  
*Melothria dulcis*



7 María panga  
*Piper umbellatum*



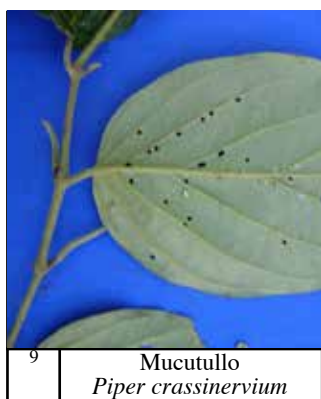
9 Mata maleza  
*Topobea asplundii*



1,9 Mishqui muyo  
*Clavija weberbaueri*



2,4,  
5,6 Misunsal  
*Cordia alliodora*



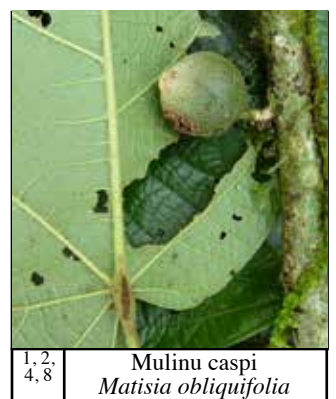
9 Mucutullo  
*Piper crassinervium*



2,4,9 Mucutullo yura  
*Piper longicaudatum*



2,9,  
10 Mucutullo yura  
*Sanchezia skutchii*



1,2,  
4,8 Mulinu caspi  
*Matisia obliquifolia*



9  
Mulupa huasca  
*Uncaria tomentosa*



2, 4,  
10  
Muyo dólar huasca  
*Dalbergia monetaria*



2, 7,  
10  
Niabi chucu  
*Erythrina amazonica*



2, 4, 9  
Nina curo yura  
*Cestrum racemosum*



9, 10  
Nina huasca  
*Pinzona coriacea*



1, 4, 5  
Pacai yura  
*Inga edulis*



1, 2, 9  
Paitzi  
*Loreya subandina*



2, 4  
Paitzi  
*Miconia longifolia*



7  
Paitzi  
*Miconia paleacea*



2, 4, 9  
Paitzi  
*Miconia splendens*



2, 4  
Paitzi  
*Miconia triplinervis* subsp. *triplinervis*



2, 4  
Paitzi atun  
*Miconia zubenetana*



2, 4  
Paitzi quillo  
*Miconia pilgeriana*



1, 2, 9  
Palanda  
*Musa x paradisiaca*



10  
Palanda  
*Musa velutina*



1, 2, 4,  
5, 9  
Palta  
*Persea americana*



2, 9  
Pamigua chunda  
*Euterpe precatoria* var. *precatoria*



1, 9  
Papanco  
*Cyclanthus bipartitus*



2, 4  
Paparo ardilla  
*Casearia mariquitensis*



1, 2, 7  
Papaya  
*Carica papaya*



1, 2, 10 Paso  
*Gustavia macarenensis* subsp. *macarenensis*



9, 10 Pasuma panga  
*Manekia sydowii*



1 Patas  
*Theobroma bicolor*



2, 5, 6 Picuanga  
*Pourouma minor*



7, 9 Pilchi  
*Crescentia cujete*



2, 4, 5, 6, 7, 10 Pilchi muyo  
*Metteniusa tessmanniana*



1, 2, 4, 5 Pilingas cachi  
*Inga marginata*



2, 6, 9 Pinlla  
*Aspidosperma rigidum*



2, 10 Pischí micuna muyo  
*Psychotria pichisensis*



2 Pishco muyo  
*Palicourea mansoana*



1, 2, 3, 7, 8, 9 Pitón  
*Grias neuberthii*



2, 4, 6, 9 Pivi  
*Piptocoma discolor*



9 Puca chini  
*Urera laciniata*



2, 4 Puca paitzi  
*Miconia calvescens*



10 Puca paitzi  
*Miconia punctata*



10 Puca palanda  
*Musa uranoscopus*



2, 4, 5, 6 Pucuna huapa  
*Virola calophylla*



2 Pular  
*Coussapoa villosa*



2, 10 Punci  
*Alchornea glandulosa*



1, 2, 4, 5, 6 Punduchi  
*Pleurothyrium poeppigii*



9 Punllu panga  
*Gurania eriantha*



3 Quibilina  
*Phyllanthus brasiliensis*



1, 2, 5, 6 Quillo ajua  
*Nectandra hihua*



10 Quillo sisa  
*Pachystachys lutea*



7 Quillo sisa  
*Palicourea subspicata*



10 Quindi sisa  
*Aphelandra aff. ameleta*



2 Quiru panga  
*Rudgea cornifolia*



9 Qulunsu  
*Costus scaber*



1, 2, 6, 7 Ramos yura  
*Astrocaryum urostachys*



4, 6 Roble caspi  
*Hirtella triandra*



8, 10 Rucu sacha tulan  
*Heliconia episcopalis*



1, 2, 5 Sacha avío  
*Pouteria trilocularis*



2, 7, 9 Sacha calentura panga  
*Callicarpa acuminata*



2, 4 Sacha guayusa  
*Symplocos arechea*



2 Sacha huasca  
*Lundia puberula*



9 Sacha ichac huasca  
*Cissus microcarpa*



9 Sacha illa huanca panga  
*Centropogon lorentensis*



2, 9 Sacha jinjibre  
*Renalmia cernua*



2, 6 Sacha manduru  
*Bixa platycarpa*



2, 4, 7 Sacha manduru  
*Vismia baccifera* subsp. *dealbata*



2, 4, 6, 7  
Sacha manduru  
*Vismia floribunda*



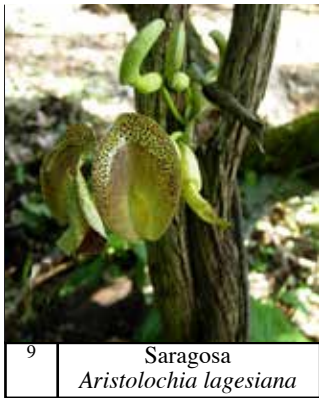
2  
Sacha pilche  
*Alibertia itayensis*



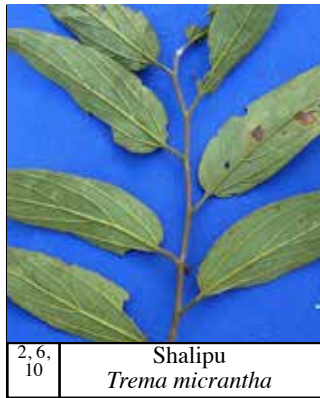
1, 2, 9  
Sacha tzicta  
*Pentagonia spathicalyx*



1, 2, 4  
Sara muyo  
*Hasseltia floribunda*



9  
Saragosa  
*Aristolochia lagesiana*



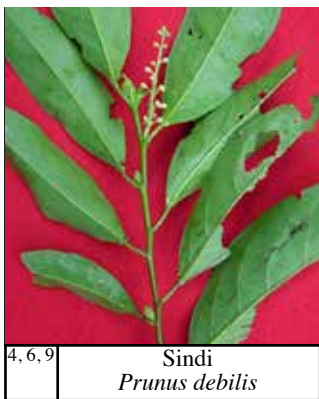
2, 6, 10  
Shalipu  
*Trema micrantha*



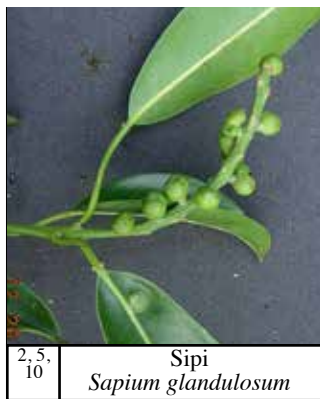
4, 10  
Shia  
*Posoqueria latifolia*



2, 5, 6  
Sicu caspi  
*Meliosma vasquezii*



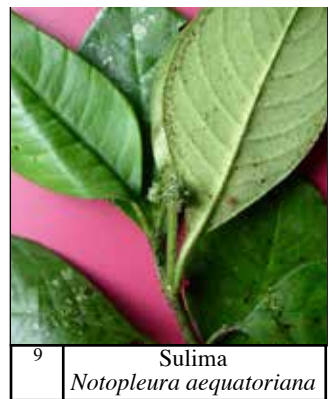
4, 6, 9  
Sindi  
*Prunus debilis*



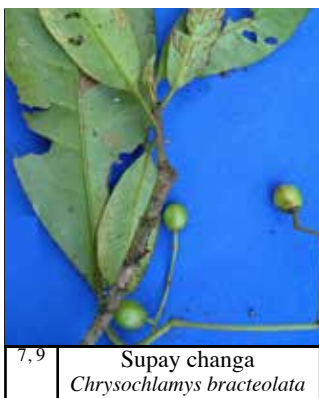
2, 5, 10  
Sipi  
*Sapium glandulosum*



9  
Sipi  
*Sapium marmieri*



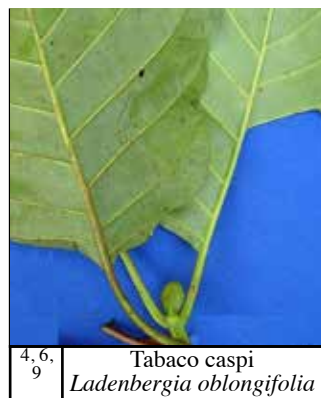
9  
Sulima  
*Notopleura aequatoriana*



7, 9  
Supay changa  
*Chrysochlamys bracteolata*



2, 4, 6, 9, 10  
Supay changa  
*Coccoloba fallax*



4, 6, 9  
Tabaco caspi  
*Ladenbergia oblongifolia*



9, 10  
Taca chipo  
*Anthurium decurrens*



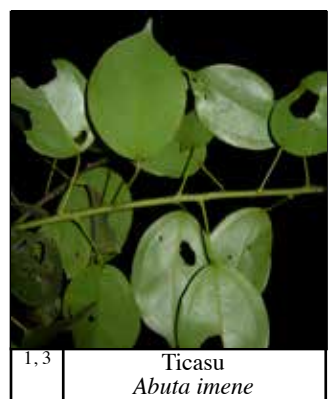
10  
Tamia yura  
*Dendropanax arboreus*



7  
Tamia yura  
*Leonia occidentalis*



2, 5, 6, 7, 8  
Tian caspi  
*Hieronyma alchorneoides*



1, 3  
Ticasu  
*Abuta imene*



9 Tsicta  
*Tabernaemontana sananho*



3 Tuclla caspi  
*Heisteria acuminata*



3 Tuclla caspi panga  
*Neosprucea sucumbiensis*



7, 10 Tuclla china muyo  
*Burmeistera glabrata*



2, 6 Tucuta  
*Guarea kunthiana*



2, 5, 6 Tucuta  
*Guarea pterorhachis*



2, 8, 10 Tulán  
*Heliconia rostrata*



8, 10 Tulán  
*Heliconia stricta*



2, 1, 9 Tuta pishco ila  
*Clarista biflora*



2 Tuta pishco ila  
*Ficus ypsilophlebia*



2, 5, 6 Tuta pishco muyo yura  
*Rauwolfia praecox*



1 Tutayo  
*Trichostigma peruvianum*



2 Uchan panga  
*Maieta guianensis*



1 Uchilla chihuilla  
*Ananas nanus*



7, 8, 10 Uchu huasca  
*Capsicum annum*



1 Uchu laran  
*Solanum stramonifolium*



6 Ucscha  
*Geonoma macrostachys*



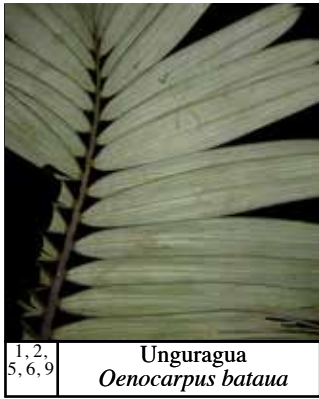
1, 2, 4 Uctian pacay  
*Inga sapindoides*



2, 10 Ucucha cara huasca  
*Annona neglecta*



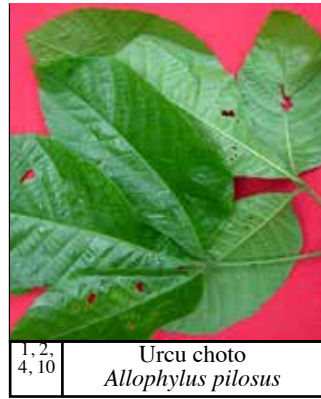
1, 2 Ucucha granadilla  
*Passiflora kermesiana*



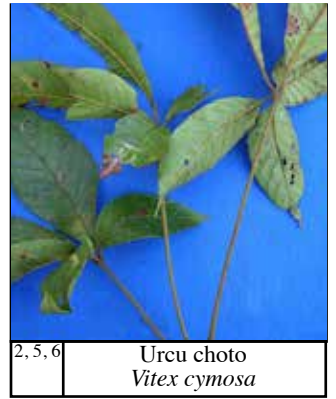
1, 2, 5, 6, 9  
Unguragua  
*Oenocarpus bataua*



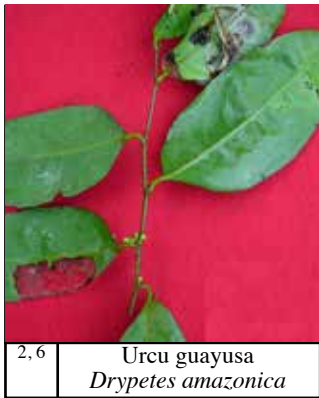
1, 2, 6  
Urcu avío  
*Sarcaulus vestitus*



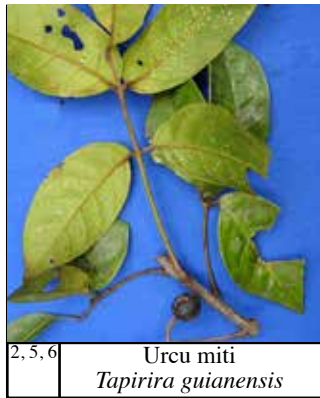
1, 2, 4, 10  
Urcu choto  
*Allophylus pilosus*



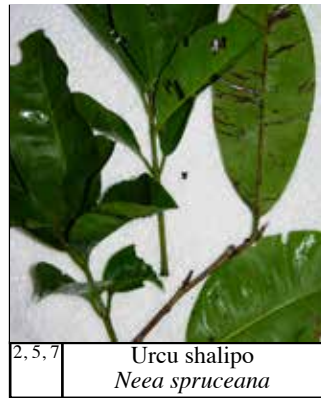
2, 5, 6  
Urcu choto  
*Vitex cymosa*



2, 6  
Urcu guayusa  
*Drypetes amazonica*



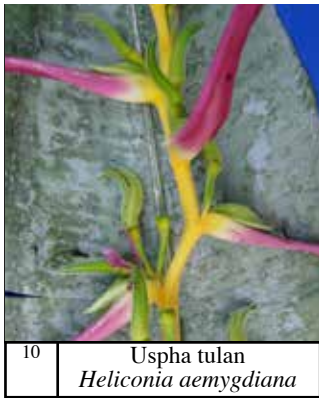
2, 5, 6  
Urcu miti  
*Tapirira guianensis*



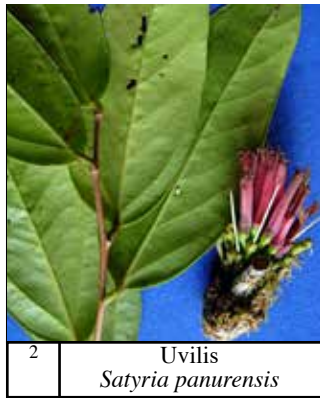
2, 5, 7  
Urcu shalipo  
*Neea spruceana*



2, 5, 6, 9  
Urcu tuta pishco ila  
*Ficus tonduzii*



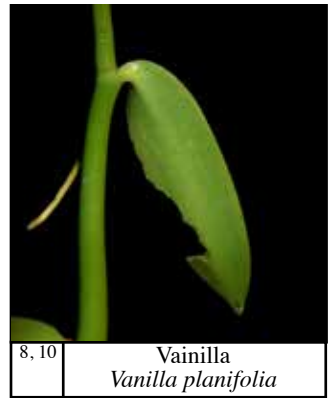
10  
Uspha tulan  
*Heliconia aemygdiana*



2  
Uvilis  
*Satyria panurensis*



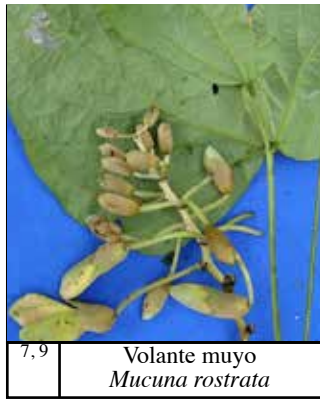
1, 2, 7  
Uvilla  
*Pourouma cecropiifolia*



8, 10  
Vainilla  
*Vanilla planifolia*



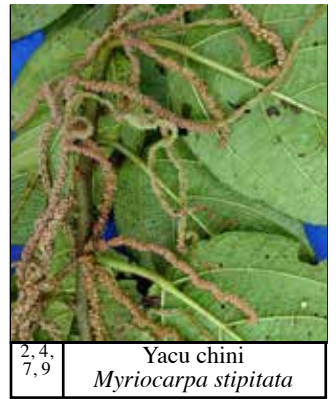
1, 2, 4  
Venado panga yura  
*Calyptranthes nervata*



7, 9  
Volante muyo  
*Mucuna rostrata*



7  
Yacami panga  
*Anthurium eminens*



2, 4, 7, 9  
Yacu chini  
*Myriocarpa stipitata*



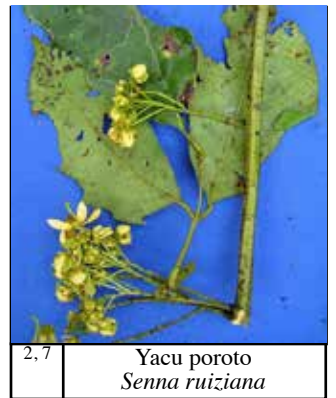
2, 5, 10  
Yacu choto  
*Citharexylum poeppigii*



2  
Yacu ila  
*Trophis caucana*



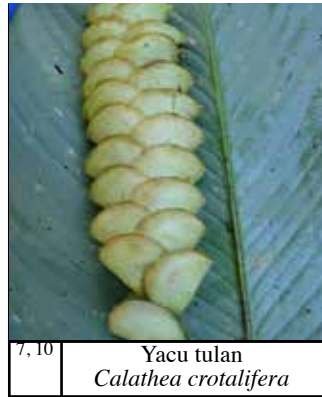
2, 7, 9  
Yacu paitzi  
*Miconia rivalis*



2, 7  
Yacu poroto  
*Senna ruiziana*



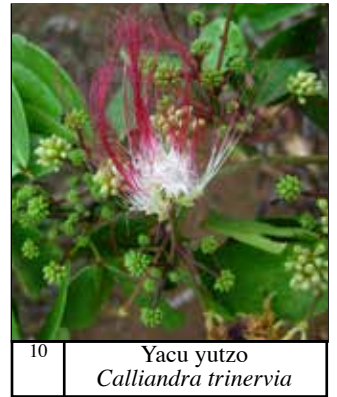
2, 4, 5  
Yacu tucuta  
*Guarea guidonia*



7, 10  
Yacu tulan  
*Calathea crotalifera*



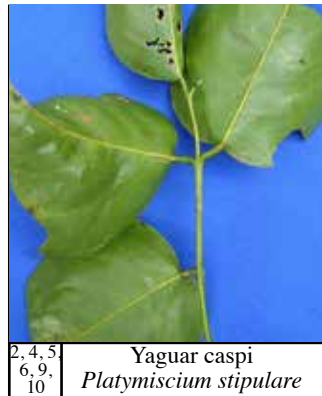
2, 7, 10  
Yacu yutzo  
*Calliandra angustifolia*



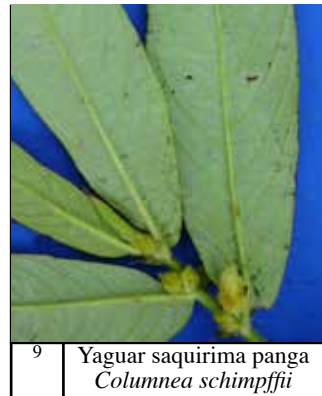
10  
Yacu yutzo  
*Calliandra trinervia*



2, 7, 9, 10  
Yacu yutzo  
*Zygia longifolia*



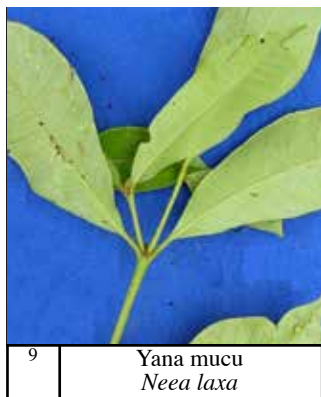
2, 4, 5, 6, 9, 10  
Yaguar caspi  
*Platymiscium stipulare*



9  
Yaguar saquirima panga  
*Columnea schimpffii*



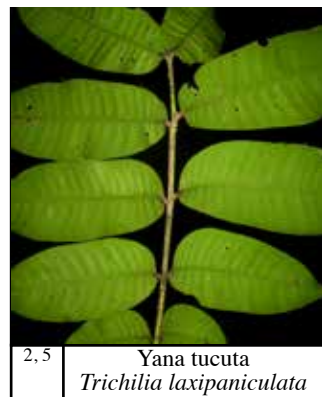
6, 7, 9  
Yana balsa  
*Ochroma pyramidale*



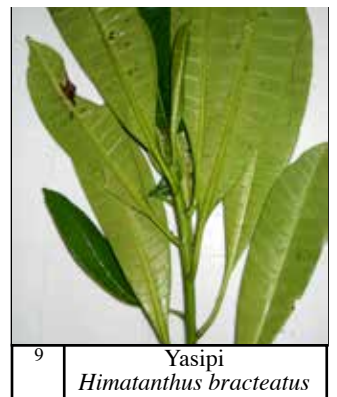
9  
Yana mucu  
*Neea laxa*



9  
Yana mucu  
*Neea aff. verticillata*



2, 5  
Yana tucuta  
*Trichilia laxipaniculata*



9  
Yasipi  
*Himatanthus bracteatus*



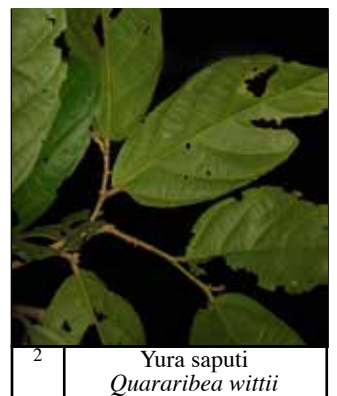
3, 9, 10  
Yocu tsila  
*Cecropia membranacea*



2, 5  
Yura ajua  
*Endlicheria metallica*



2  
Yura huanchi ila  
*Ficus paraensis*



2  
Yura saputi  
*Quararibea wittii*



2, 7, 9  
Yura tamburo  
*Vochysia bracediniae*



2, 4, 10  
Yutzo  
*Zygia coccinea*



5, 6  
Yuyun  
*Terminalia amazonia*



1  
Zectla  
*Erythrina edulis*